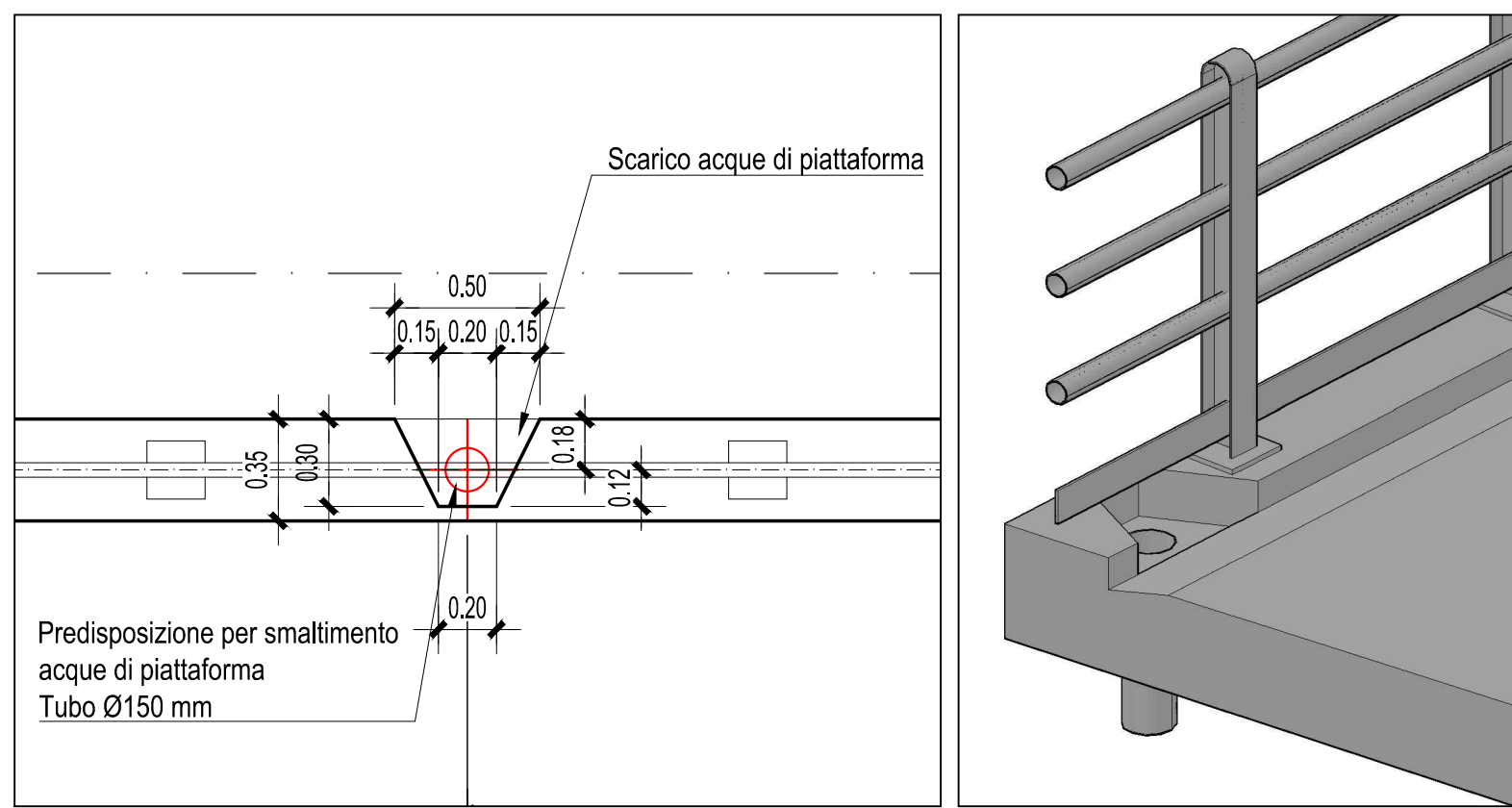
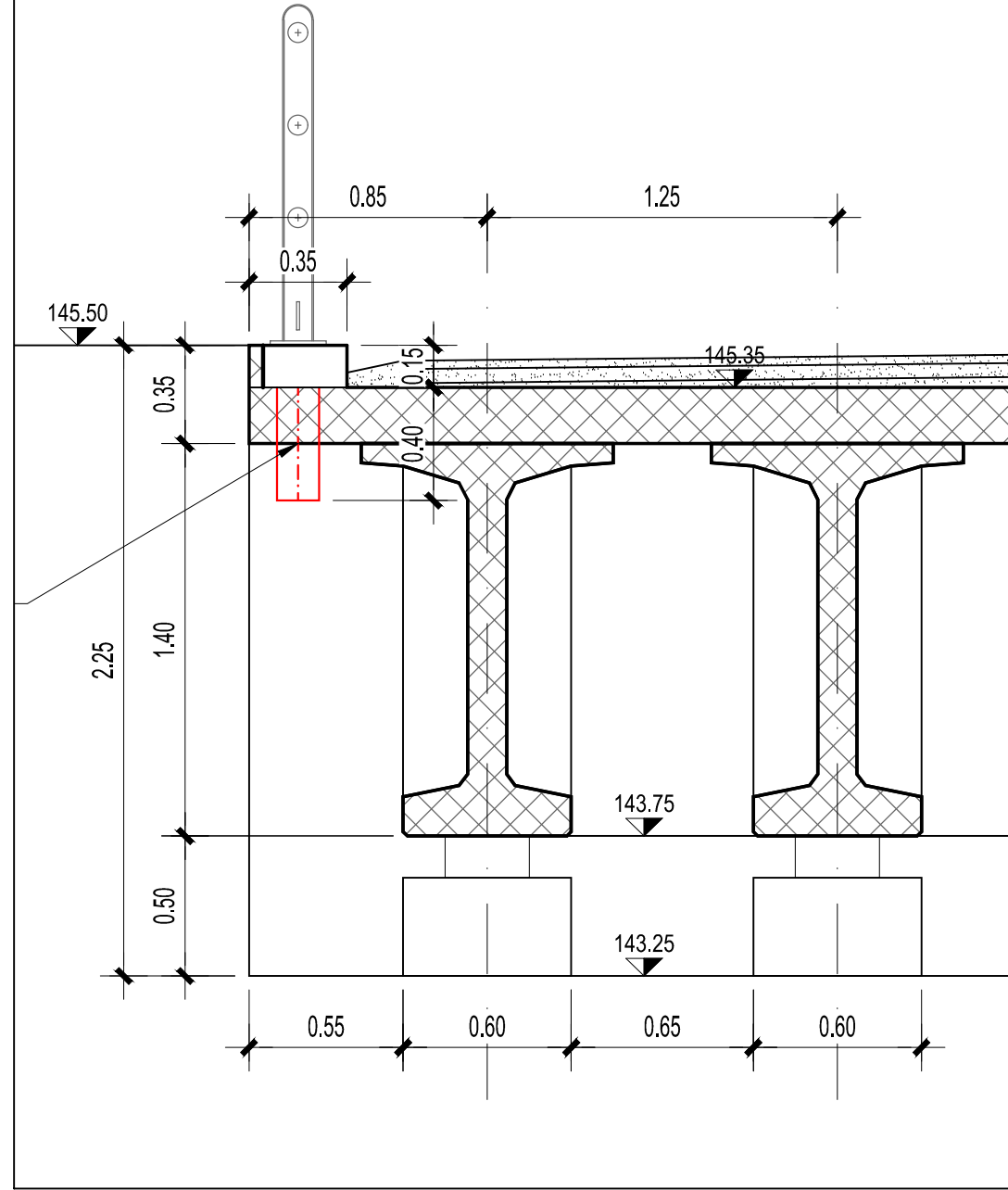


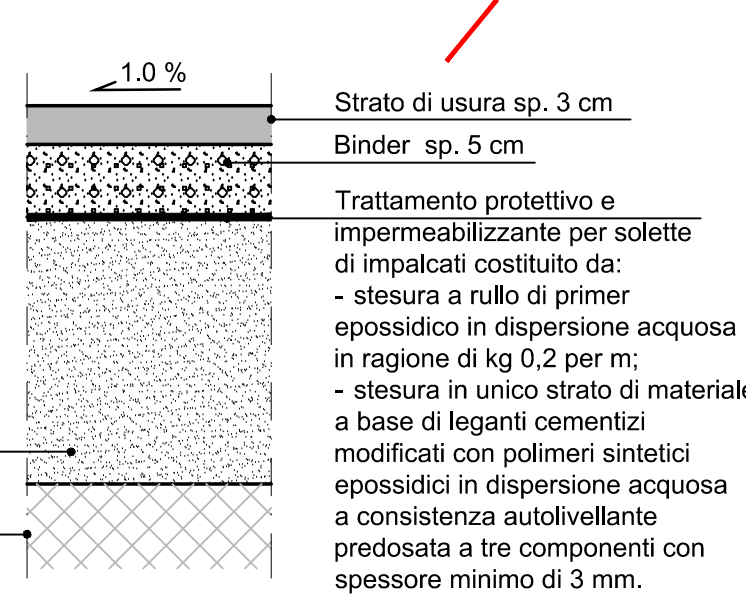
SMALTIMENTO ACQUE IMPALCATO PIANTE DI DETTAGLIO - Scala 1:25



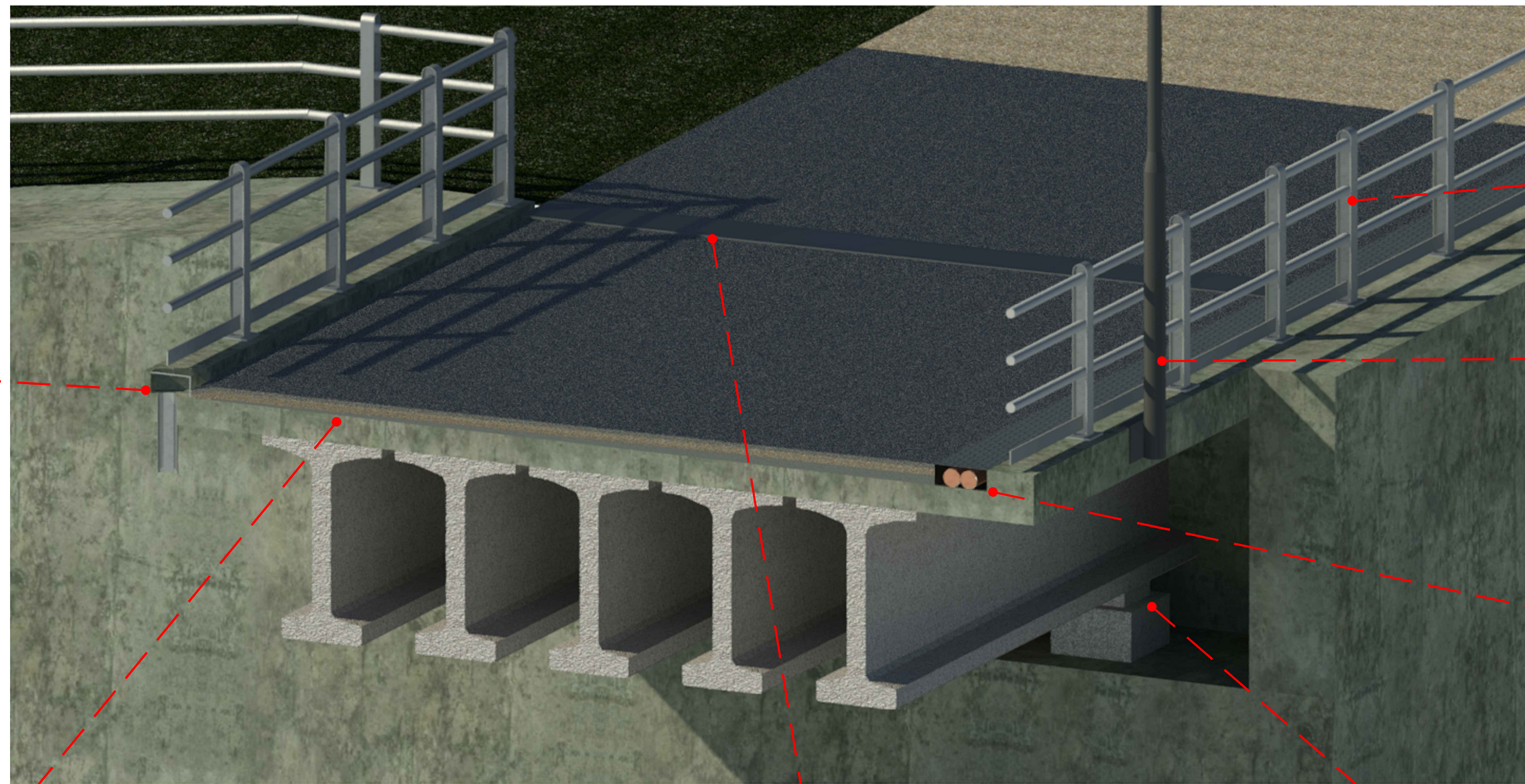
SEZIONE TRASVERSALE - Scala 1:25



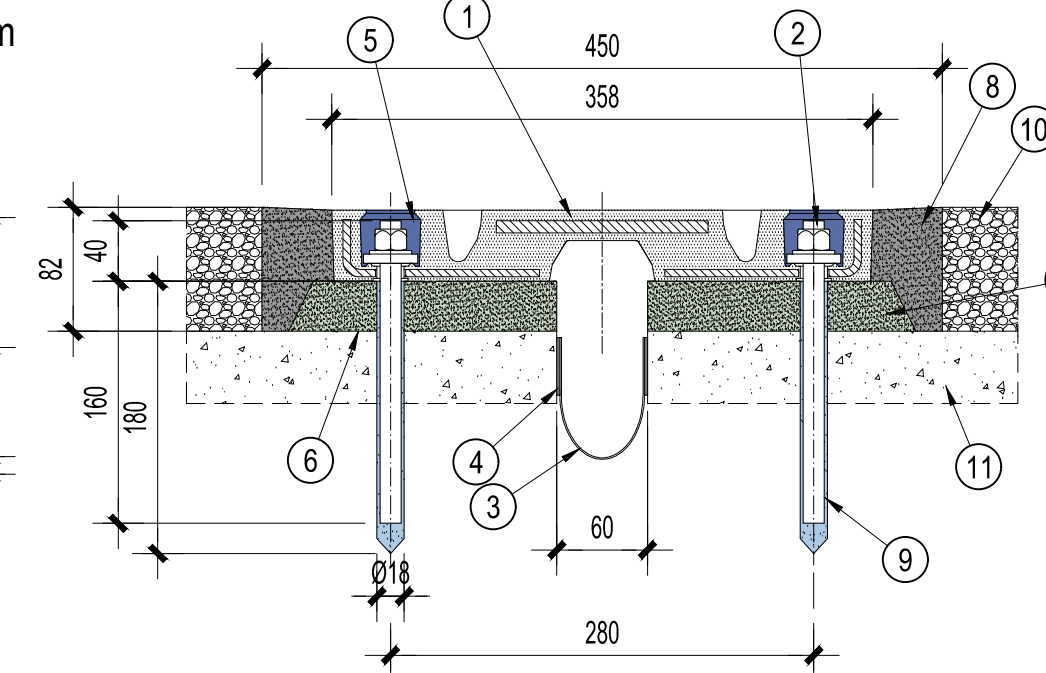
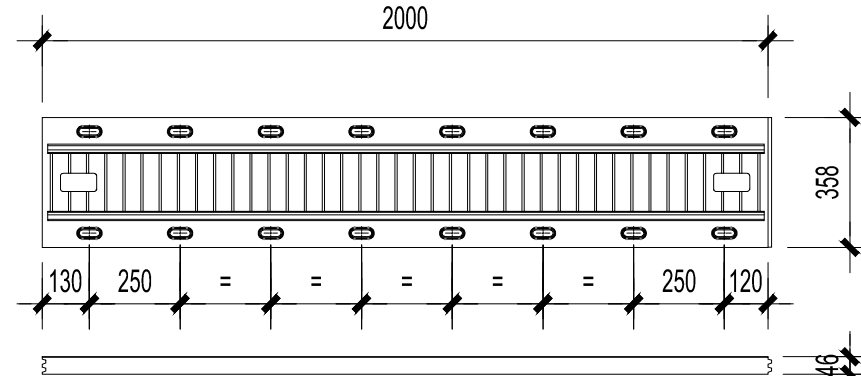
DETTAGLIO PAVIMENTAZIONE
Scala 1:10



VISTA 3D - IMPALCATO DI ATTRAVERSAMENTO MANUFATTO C



DETTAGLIO GIUNTO IMPALCATO d = 80 mm
SEZIONE TRASVERSALE - Scala 1:25



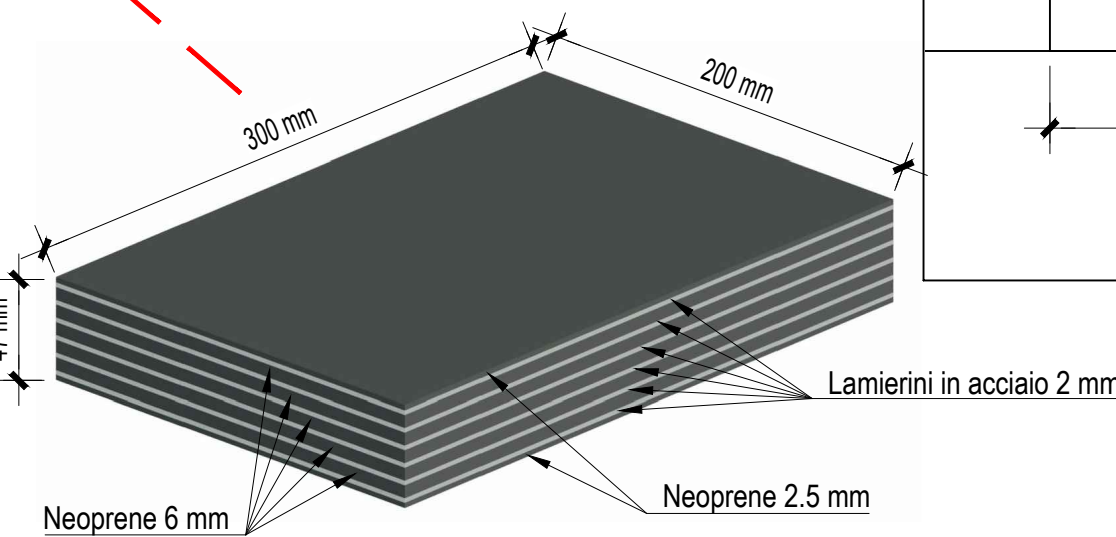
Type	Design Movement (mm)	Weight (kg)
AGFLEXI 80 a esp.	+40 / +40	70

(*) not supplied, equivalent material allowed
(**) not supplied, to be used only if requested

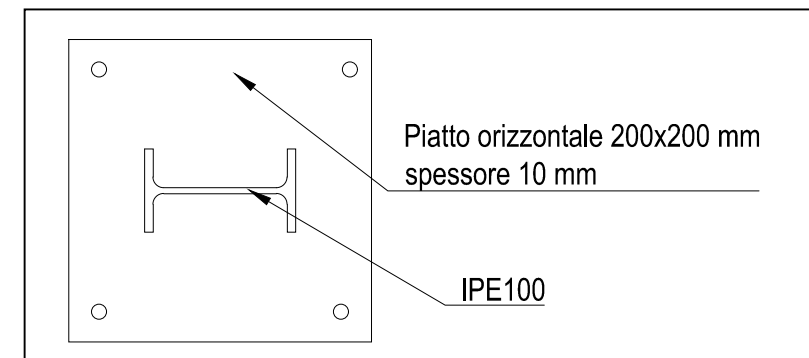
11	Concrete	-	-
10	Asphalt	-	-
9	Anchor Bar Grouting	-	-
8	Transfer Strip	(*)	Washcoat EP-All
7	Building Mortar	(*)	BASF Mortarfix II
6	Two-Component Epoxy Primer	(*)	BASF Mortarfix S24
5	Self Heel Sealant	-	Tecnoseal 80
4	Two-Component Epoxy Bonding System	-	Harman EPO-CE
3	Waterproof Strip	-	WV Seals - Rubber
2	Anchor Bars - Washers - Nuts	AF 14	EN 20888
1	Expansion Joint	CW 10010	EN 10010

POS. DESCRIPTION NOTE STANDARD MATERIAL

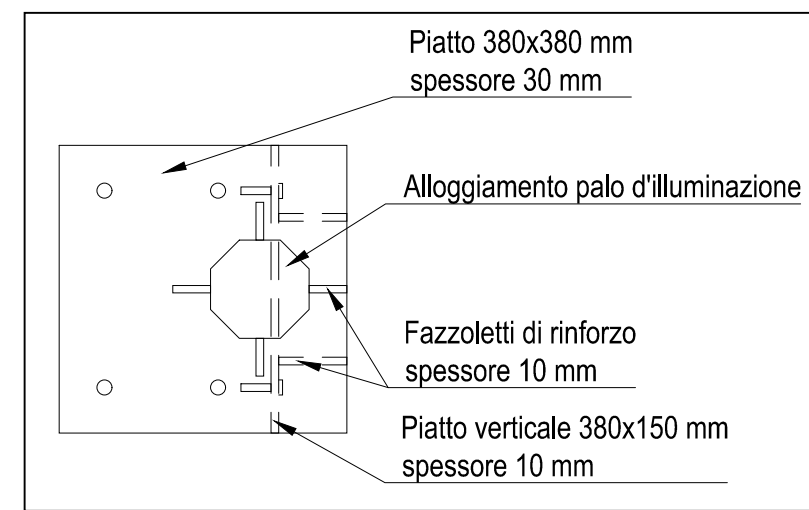
DETTAGLIO APPOGGIO
TRAVI PREFABBRICATE



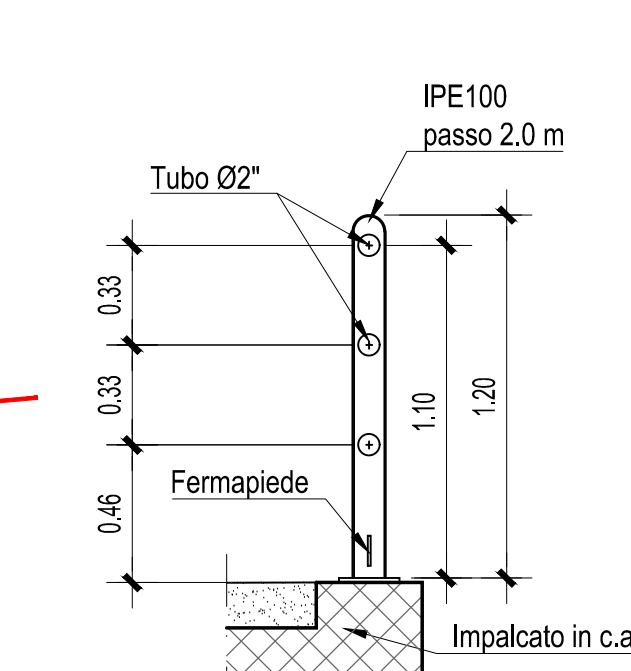
DETTAGLIO PIASTRA D'ANCORAGGIO PARAPETTO
Scala 1:5



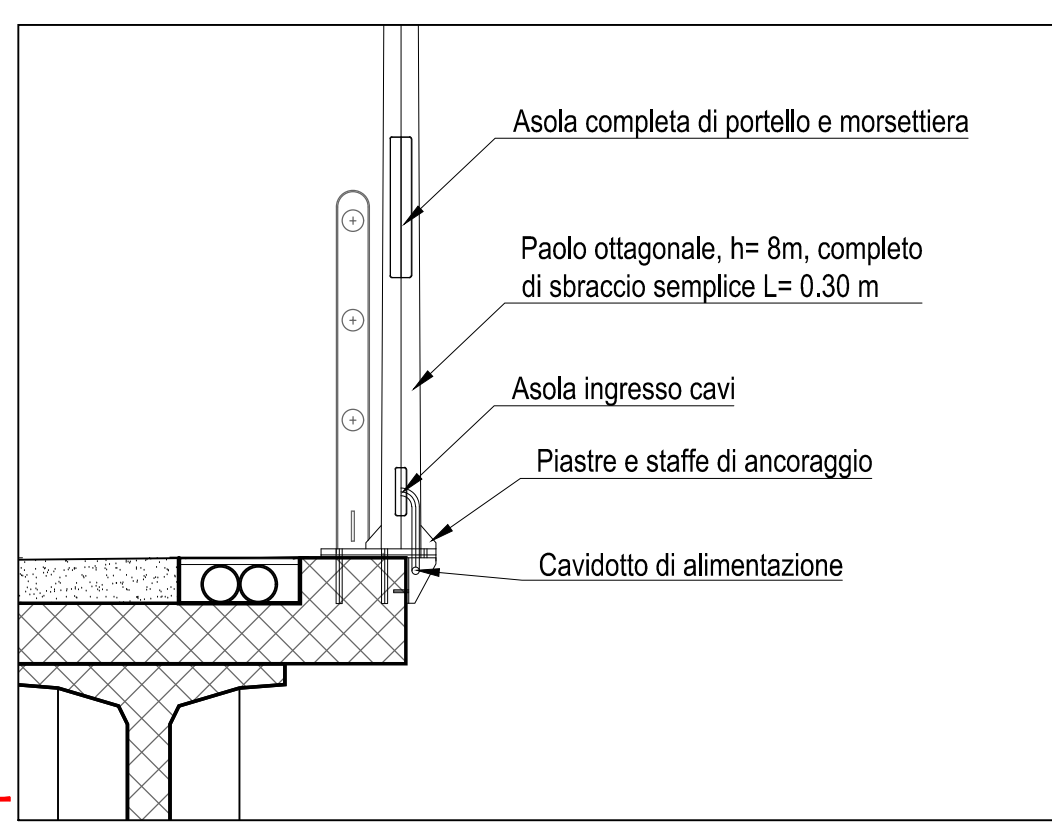
DETTAGLIO PIASTRA D'ANCORAGGIO
ILLUMINAZIONE IMPALCATO - Scala 1:10



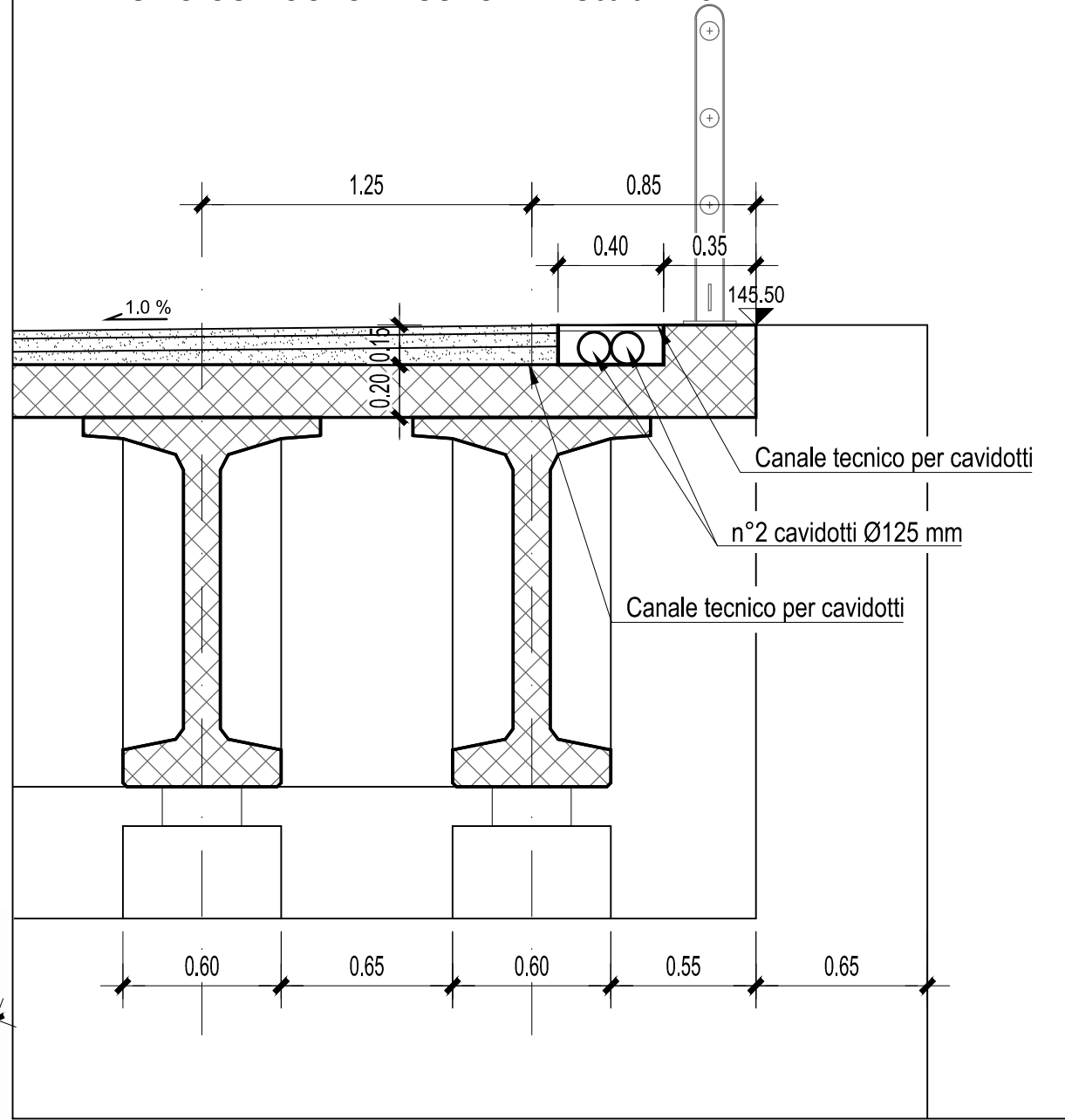
PARAPETTO METALLICO - Scala 1:25



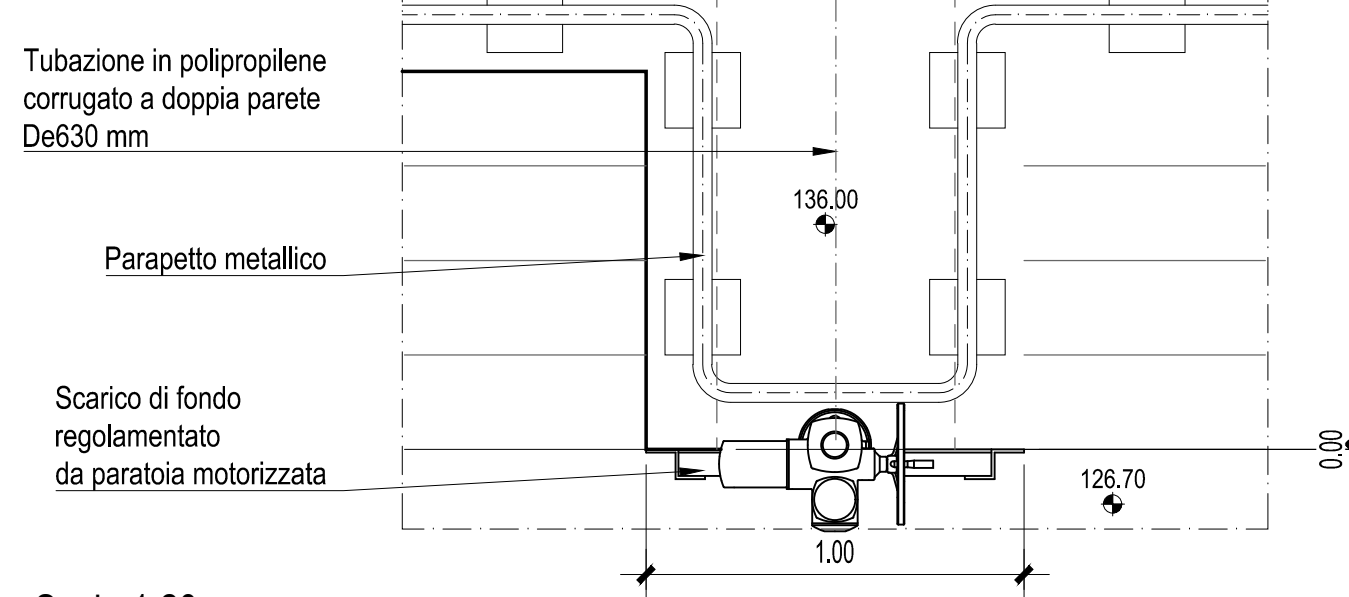
DETTAGLIO ILLUMINAZIONE IMPALCATO - Scala 1:25



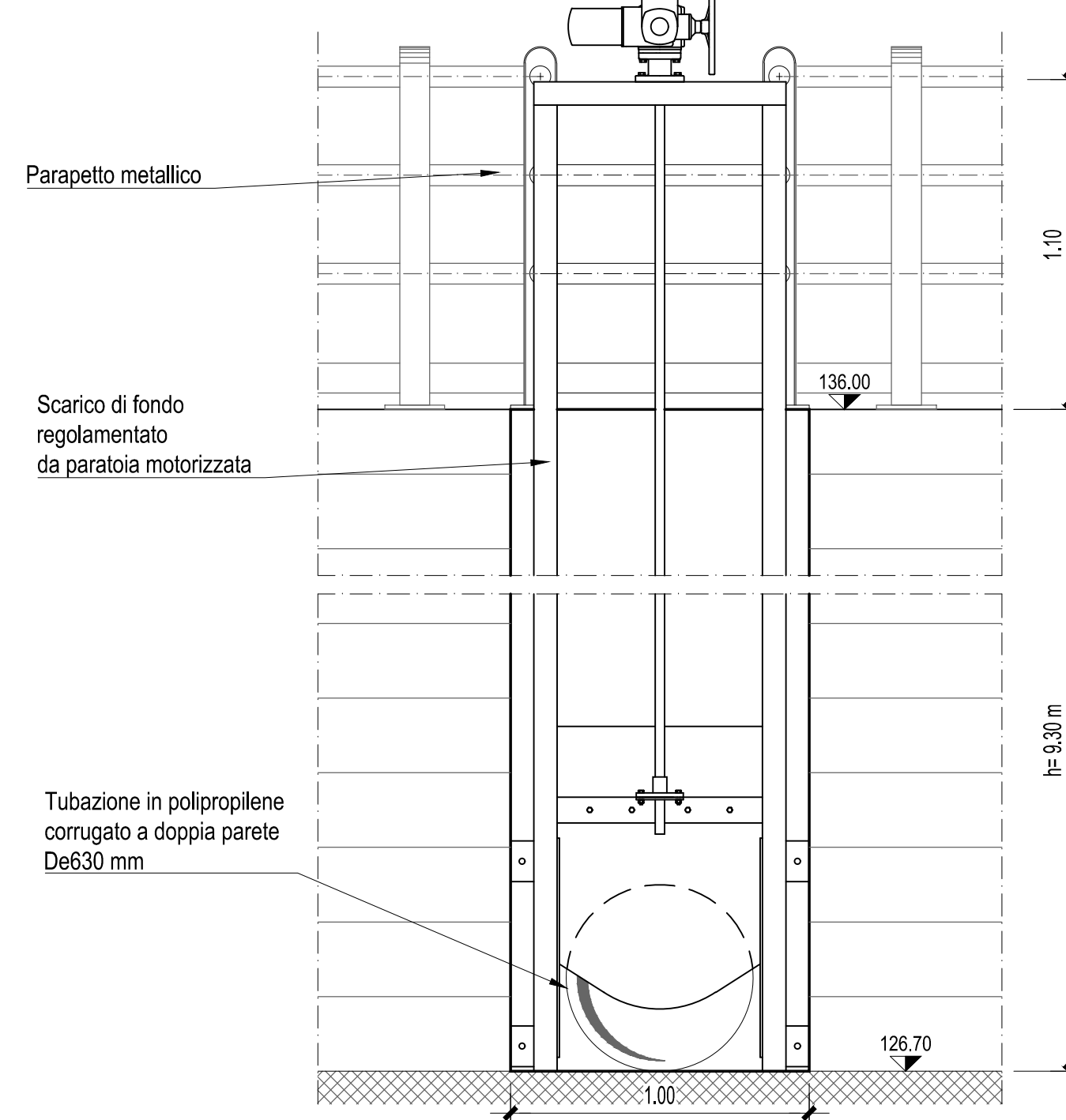
DETTAGLIO CUNICOLO PASSACAVI - Scala 1:25



SCARICO DI FONDO MANUFATTO C
PIANTA DI DETTAGLIO - Scala 1:20



PROSPETTO - Scala 1:20



Via Garibaldi 75 - 43121 PARMA

CASSA DI ESPANSIONE DEL TORRENTE BAGANZA
NEI COMUNI DI FELINO, SALA BAGANZA,
COLLECCHIO E PARMA (PR-E-1047)

PROGETTO ESECUTIVO

01	07/2020	Revisione per osservazioni DDB e validazione	TRESSO	BERTERO	BERTERO
00	07/2019	Prima emissione	TRESSO	BERTERO	BERTERO
REV.	DATA	MODIFICHE	REDAZIONE	VERIFICA	AUTORIZZ.
MANUFATTO REGOLATORE C IMPALCATO STRADALE PARTICOLARI COSTRUTTIVI					
ASSOCIAZIONE TEMPORANEA DI IMPRESE					
MANDATARIO		MANDATARI			
HYDRODATA		art binipartners ETATEC STUDIO PROLUM ROSS SOIL SAI			
IL R.U.P.:		Progettista/Progettista Impiegato			
Dott. Ing. Mirella Vergnani		Dott. Ing. Roberto Bertero			
(documento firmato digitalmente)		(documento firmato digitalmente)			
CODICE ELABORATO:		varie			
BAG310MRCDCP021		LUGLIO			
(di 1)		2020			
CAP. (2)		SCALA			
TIPO. (3)					
DOC. (4)					
PROG. (5-6) REV. (7)					